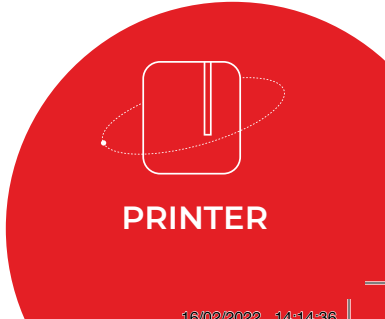
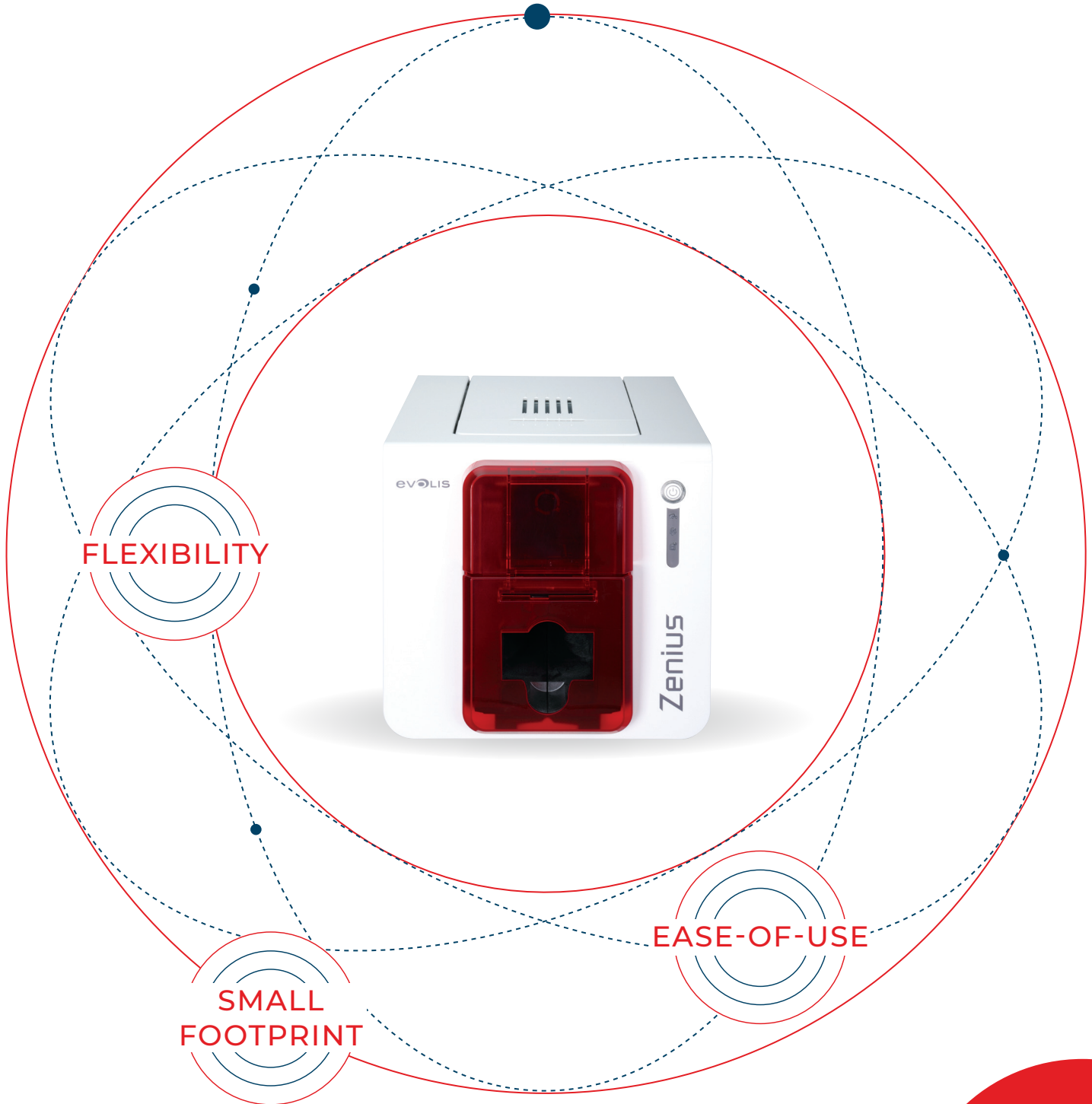




Identify what matters

# Zenius





# The Compact and Agile Card Printer

The **Zenius** printer is designed for single sided printing and encoding of a very large variety of plastic cards. Zenius generates color or monochrome cards, individually or in small runs, with top quality results. Zenius is a user-friendly, compact and cost-effective solution for delivering your personalized cards.



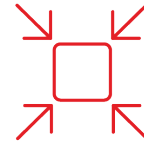
## Flexibility

- With Zenius, you can choose to insert your cards individually or with the automatic feeder.
- The «**Expert**» version of Zenius features **combinable encoding functions**: magnetic encoding, contact and contactless chips. It takes just a few minutes to install these modules!



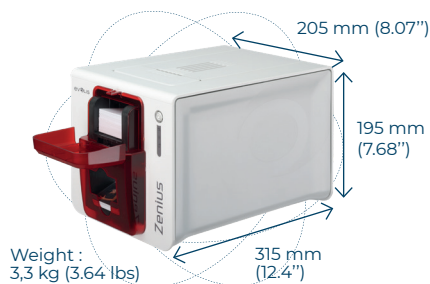
## Ease of Use

- With the **Evolis Premium Suite® software**, you can receive notifications and easily control the printer from your computer.
- Evolis High Trust® ribbons** are easy to install and automatically recognized and set by the printer.

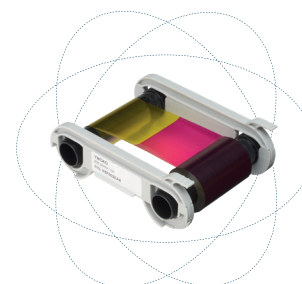


## Small Footprint

- Hardly larger than a standard sheet of paper, Zenius fits perfectly into any environment, be it the office or a customer service counter.
- Zenius is an eco-designed printer: very efficient sleep mode and low energy consumption.



ZENIUS



- Manual or automatic card feeder

- Easy handling, automatic ribbon recognition and setup!

# Main Features

Full technical specifications  
on [www.evolis.com](http://www.evolis.com)

## General Features

- Direct-to-card dye-sublimation/ Resin thermal transfer
- Single-sided printing, edge-to-edge
- 300 dpi print head (11.8 dots/mm)
- 16 million colors
- 16 MB memory (RAM)

## Printing Performances

- Color (YMCKO): 120 - 150 cards/hour<sup>1</sup>
- Monochrome: 400 - 500 cards/hour

## Interfaces

- USB (1.0, 1.1, 2.0, 3.0), cable supplied
- Ethernet TCP-IP 10BaseT, 100BaseT (Traffic Led) on the Expert version

## Card Management & Specifications

- Automatic or manual feeding
- Feeder capacity: 50 cards (0.76 mm – 30 mil)
- Output hopper capacity: 20 cards (0.76 mm – 30 mil)
- Card thickness: 0.25 to 0.76 mm (10 to 30 mil), gauge adjustment
- Card types: PVC cards, composite PVC cards, PET cards, ABS cards<sup>1</sup>, special varnished cards<sup>1</sup>
- Card format: ISO CR80 - ISO 7810 (53.98 mm x 85.60 mm)

## Optional Features

- Colors available: fire red & grey brown
- Expert version: Ethernet TCP-IP, encoding modules as options

## Additional Encoding Modules

- Available modules:
  - Magnetic stripe encoder ISO 7811 HiCo/LoCo, JIS2
  - Smart contact station ISO 7816-2
  - Contact smart card encoder - PC/SC, EMV 2000-1
  - Contactless smart card encoder - ISO 14443A, B, ISO15693, MIFARE, DESFire, HID iCLASS
  - Other specific encoders upon request
- Internal USB or IP ports
- Options can be combined
- Factory-installed or installed on site

## Safety

- Support for Kensington<sup>®</sup> security lock
- Data encryption for magnetic encoding

## Display

- Printer LEDs
- Graphical notifications from the printer<sup>2</sup>: cleaning alerts, empty/low level ribbon and card alerts, etc.

## Evolis High Trust<sup>®</sup> Ribbons

To maximize the quality and durability of printed cards, the lifespan of the print head and the overall printer reliability, use Evolis High Trust<sup>®</sup> ribbons.

- Automatic identification and setting
- Delivered in a drop-in cassette for easy handling
- Ribbon saver for monochrome printing

List of ribbons available on [www.evolis.com](http://www.evolis.com)

## Software



- Delivered with Evolis Premium Suite<sup>®</sup> for Windows<sup>®</sup>:
  - Printer driver
  - Evolis Print Center for administration and settings
  - Evolis Printer Manager for graphical notification<sup>3</sup>
  - 24/7 online support
  - Compatible with Windows<sup>®</sup> (32/64 bits): XP SP3, Vista, W7, W8, W10
- Delivered with cardPresso XXS Lite for designing and editing badges:
  - Internal database up to 50 records
  - Windows<sup>®</sup> (from XP onwards) and Mac OS X
- Delivered with a driver for Mac OS X (from 10.5 onwards)
- Linux OS upon request
- Evolis Premium SDK for remote supervision of the printer, while facilitating and speeding up integration into IT systems

## Eco-Friendly Design, Certifications and Statement of Compliance

- Standby, sleep modes & reduced energy consumption
- CE, FCC, IEC, VCCI, CCC, KC, BIS, EAC
- RoHS

## Size & Weight

- Size (H x W x D): 195 x 205 x 315 mm (7.68" x 8.07" x 12.4")
- Weight: 3.3 kg (7.3 lbs)

## Warranty

- 2-year warranty (printer and print head)<sup>4</sup>
- Warranty extension available as an option

<sup>1</sup> Under specific conditions / <sup>2</sup> Depends on the Windows<sup>®</sup> version / <sup>3</sup> Requires the .net 4.0 client profile version  
<sup>4</sup> Warranty subject to observance of specific conditions and use of Evolis High Trust<sup>®</sup> ribbons



# evolIS

Identify what matters

## A GLOBAL PROVIDER OF IDENTIFICATION SOLUTIONS

- **Worldwide leader** in card personalization systems for decentralized issuance
- **International expertise and local support** through a network of 400 distributors in 140 countries
- A unique ability to meet specific customer specifications with a **Project department dedicated to design and construction of tailor-made solutions**
- **Evolis is ISO 9001 certified**, which reflects our comprehensive approach, both in terms of quality and continuous improvement

[www.evolis.com](http://www.evolis.com)

**SMARTTECHID**  
Total Access & Identity Solutions

**Smarttech ID Company, Inc.**  
**Tel: +1 813-852-2010**  
**Fax: +1 813-852-2523**  
**Email: [info@smarttechid.com](mailto:info@smarttechid.com)**  
**Website: [www.smarttechid.com](http://www.smarttechid.com)**

### HQ / EUROPE - MIDDLE-EAST - AFRICA

Evolis - 14 avenue de la Fontaine - ZI Angers-Beaucouzé  
49070 - Beaucouzé - FRANCE  
T +33 (0) 241 367 606 - F +33 (0) 241 367 612 - [info@evolis.com](mailto:info@evolis.com)

### USA - CANADA

Evolis Inc. - Providence - RI - USA - [evolisinc@evolis.com](mailto:evolisinc@evolis.com)

### LATIN AMERICA

Evolis Inc. - Fort Lauderdale - FL - USA - [evolisinc@evolis.com](mailto:evolisinc@evolis.com)

### ASIA - PACIFIC

Evolis Asia Pte Ltd - Singapore - [evoliasia@evolis.com](mailto:evoliasia@evolis.com)

### CHINA

Evolis China - Shanghai - [evolischina@evolis.com](mailto:evolischina@evolis.com)

### INDIA

Evolis India - Mumbai - [evolisindia@evolis.com](mailto:evolisindia@evolis.com)