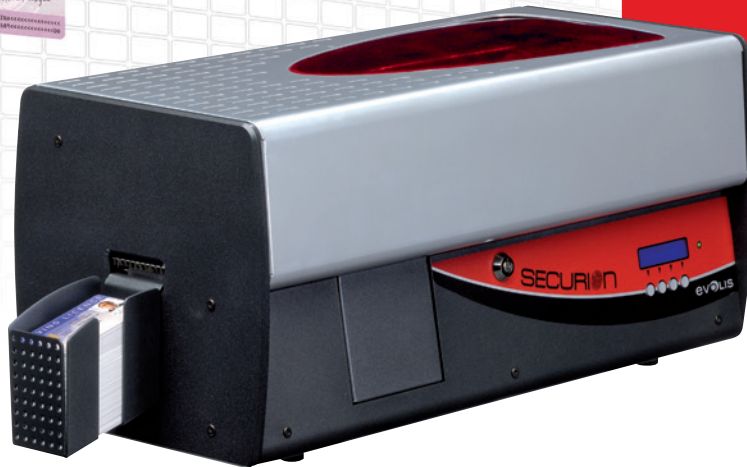


SECURIOn

The **Securion** printer is the best solution for personalizing and laminating secure cards at customer-facing counters. It caters to the growing need for security and fraud control and produces cards that will last significantly longer.

Securion comes with a color print module and a laminating station, both operating in dual-sided mode. It takes just one pass to print, encode and laminate a secure card.



THE PRINTER FOR HIGHLY SECURE CARDS

Securion is ideal for delivering secure cards:

- National ID cards
- Driver's licenses
- Secure access control badges
- Health insurance cards

PREMIUM PROTECTION

With its one-of-a-kind lamination station, Securion **durably protects** your secure cards. The printer applies **any type of film** over the entire surface of the card - from simple varnish to patch films with ultra-high security custom holograms - for premium protection of your cards. Your cards will last for **years with virtually no wear and tear**.

PRINTING ON PC CARDS

The **Unichroma™** ribbon used with Securion makes it possible to use direct-to-card printing on **polycarbonate (PC) cards**. These extremely strong cards are used for sophisticated applications requiring a high level of security. The combination of a Securion printer and Unichroma™ ribbons offers an **economical solution** for issuing secure polycarbonate cards.

PROFESSIONAL PRINT QUALITY

Securion comes with a high-performance dual-sided color printing module featuring 300 dpi resolution for **outstanding graphics**. Photos, texts and barcodes are dependably reproduced for **quick visual identification**.

MULTIPLE ENCODING OPTIONS

To meet your specific needs, Securion provides **data encoding options** for magnetic stripe, contact and contactless smart cards. These options can be combined and can be installed on site.

INCREASED PRODUCTIVITY

Securion is designed to issue secure cards **individually or in large runs**. In a **single pass**, your cards are encoded, printed and protected, which **saves you valuable time!**

OPERATING SECURITY

Thanks to the **centralized locking system** that prevents access to consumables (ribbons, films, blank cards, rejected cards), password protection as well as a Kensington® security slot, your Securion card issuing system is **safe and secure**.

EVOLIS OFFERS A WIDE RANGE OF FILMS TO MEET ALL YOUR SECURITY NEEDS.



SECURIon

- Flip-over module for dual-sided card personalization and lamination
- Locking system to secure access to blank cards, ribbons, films and reject tray
- All encoders can be combined



- Blank card storage in a removable feeder with a capacity of 100 cards

- Front control panel with 4 keys, a 2-line LCD display and a status indicator



- Reject tray for collecting defective cards

GENERAL FEATURES

- Color printing module and lamination station
- Single or dual sided printing and lamination
- Edge-to-edge printing
- Color dye sublimation, monochrome thermal transfer
- 300 dpi print head (11.8 dots / mm)
- 16 million colors
- 16 MB of memory (RAM), to save two cards (dual-sided) to memory
- Laminating mode: heat transfer
 - Varnish or patch film
 - Dual-sided lamination
- Speed: 2 mm/s to 18 mm/s (0.08"/s to 0.71"/s)
 - Temperature: 100° C to 180° C (212° F to 356° F)

PRINT AND LAMINATION SPEED

- Single-sided YMCK printing, single-sided lamination:
 - 95 - 120 cards/hour
- Dual-sided YMCK-K printing, single-sided lamination:
 - 85 - 105 cards/hour

OPTIONAL FEATURES

- Additional 100-card feeder
- USB encoding over IP through additional USB Net Server module

ADDITIONAL ENCODING MODULES

- Modules available:
 - Magnetic stripe encoder ISO 7811 HiCo/LoCo, JIS2
 - Smart contact station ISO 7816-2
 - Contact smart card encoder - PC/SC, EMV 2000-1
 - Contactless smart card encoder - ISO 14443A, B, ISO 15693, Mifare, DesFire, HID iCLASS
 - Other specific encoders upon request
- Internal USB or IP ports
- Options can be combined
- Factory-installed or installed on site

INTERFACES

- USB (1.0, 1.1, 2.0, 3.0)
- Ethernet TCP-IP 10BaseT, 100BaseT (Traffic Led)

SAFETY

- Locking system to secure access to blank cards, ribbons, films and defective cards
- Kensington® security slot
- Password protected

DISPLAY

- Two-line LCD display and LED status indicators

RESIDENT FONTS

- Arial, Arial bold
- Barcode: Code 39, Code 128, EAN 13, 2/5 interleaved

CARD MANAGEMENT AND SPECIFICATIONS

- Removable feeder capacity: 100 cards (0.76 mm – 30 mil)
- Output hopper capacity: 100 cards (0.76 mm – 30 mil)
- Reject tray capacity: 15 cards (0.76 mm – 30 mil)
- Card thickness: 0.25 to 1 mm (10 to 50 mil), lamination recommended from 0.76 mm (30 mil), not recommended below 0.50 mm (20 mil)
- Card types:
 - PVC cards
 - PVC composite cards
 - Polycarbonate (PC) cards
 - PET-F, PET-G cards
 - ABS cards*
 - Special varnishes*
- Card format: ISO CR-80 - ISO 7810 (53.98 mm x 85.60 mm - 3.375" x 2.125")
- Lamination on standard PVC cards recommended with 0.6 mil patch or varnish

EVOLIS HIGH TRUST® RIBBONS

To maximize the quality and durability of printed cards, the lifespan of the print head and the overall printer reliability, use Evolis High Trust® ribbons.

- Ribbon capacity:
 - 5 panel YMCKO color ribbon: 200 prints/roll
 - 6 panel YMCKO-K color ribbon: 200 prints/roll
 - 1/2 panel YMCKO color ribbon: 400 prints/roll
 - Unichroma™ color ribbon for polycarbonate cards: 200 prints/roll
 - 2 panel KO black monochrome ribbon: 500 prints/roll
 - Monochrome ribbons: 1000 prints/roll* (black, red, green, blue, white, gold and silver)
- Ribbon saver for monochrome printing
- Types of laminating film:
 - Hologram varnish: 400 prints/roll
 - Clear varnish: 400 prints/roll
 - Clear patch, 1.0 mil: 200 prints/roll
 - Clear patch, 0.6 mil: 200 prints/roll
 - Alternate patch front/back, 0.6 mil and 1.0 mil: 200 prints/roll
 - Patches and varnishes on request: holograms, security inks, specific cuts
- Easy-to-load cassette for laminate films

SOFTWARE

- Compatible with Windows™ XP SP3 32/64, Vista 32/64, W7 32/64, W8 32/64
- Mac and Linux OS upon request

1 Under specific conditions

2 Warranty subject to observance of specific conditions and use of Evolis High Trust® ribbons

CERTIFICATIONS AND STATEMENT OF COMPLIANCE

- RoHS
- CE, FCC, IEC, VCCI, CCC, KC

POWER SUPPLY

- Power supply: 100-240 Volts AC, 50-60 Hz, 2 A
- Printer: 24 Volts DC, 6.25 A

OPERATING ENVIRONMENT

- Min/max operating temperature: 15° / 30° C (59° / 86° F)
- Humidity: 20% to 65% non-condensing
- Min/max storage temperature: -5° / +70° C (23° / 158° F)
- Storage humidity: 20% to 70% non-condensing
- Operating ventilation: open air

SOUND (EVALUATED ACCORDING TO THE ISO 7779 STANDARD)

Sound pressure in assistant positions LpAm (color mode YMCKO)

- When operating: 48 dB (A)
- In standby mode: 32 dB (A)

PACKAGING CONTENT

- Printer
- CD-ROM with printer driver and user manuals
- Cleaning kit
- USB Cable
- Output hopper
- Power supply and cord
- Laminate film loading cassette
- 3 empty cores for laminate films

SIZE AND WEIGHT

- Dimensions (H x W x L):
 - Without the output tray: 274.64 x 262.16 x 562.70 mm (10.81" x 22.15" x 10.32")
 - With the output tray: 274.64 x 262.16 x 658.20 mm (10.81" x 25.91" x 10.32")
- Weight: 15.4 kg (33.15 Lbs)

WARRANTY

- 2 years (printer, lamination station, print head and lamination hot roller)*, limited to 100,000 passes
- Warranty extension available as an option

SMARTTECH ID
Total Access & Identity Solutions

Smarttech ID Company, Inc.

Tel: +1 813-852-2010

Fax: +1 813-852-2523

Email: info@smarttechid.com

Website: www.smarttechid.com

KYOCERA Printhead

evolis
card printers